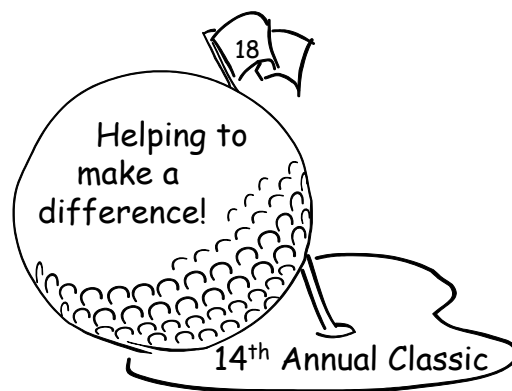


# 14<sup>th</sup> Annual



## Charity Golf Classic



## Out Door Country Club

Friday June 27<sup>th</sup>, 2008

# "I Wish I Could...Have a Pop-Up Camper"

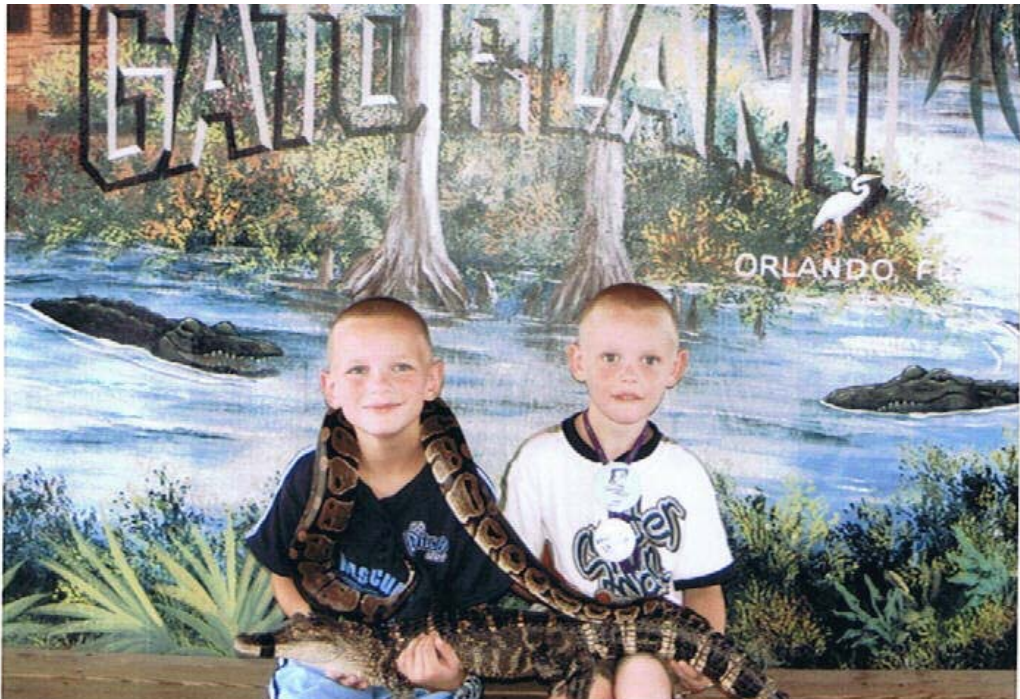
Thanks to your generous support of the Penn-Air & Hydraulics Foundation in 2007, we were able to sponsor two Wishes for a local, York County family.

Zach and Aaron are brothers who were diagnosed with the same life threatening medical condition. Six year old Zach wished for a pop-up camper and four year old Aaron wished for a trip to Disney World.

Both Zach and Aaron's wishes were granted late last summer and below is a photo of both boys in Orlando.

Thanks to the help of Make-A-Wish Foundation® of Greater PA, the Penn-Air & Hydraulics Foundation proudly "Adopted-A-Wish®" to make both Zach's and Aaron's Wishes come true. The family would like to express their thanks and appreciation for the wonderful Wishes that they received.

It is our goal this year to contribute to the growth of the Penn-Air & Hydraulics Foundation. Sponsoring another Wish for this wonderful organization is first on our list. Make-A-Wish® does create everlasting memories. We hope that you can be part of this special day!



The Make-A-Wish Foundation® of Greater PA is dedicated to the happiness of children who must bear the burden of their condition just as they begin to dream.

They grant the wishes of children with life-threatening medical conditions to enrich the human experience with hope, strength and joy.

*A copy of the official registration and financial information may be obtained from the PA Department of State by calling toll-free, within PA 1-800-732-0999. Registration does not imply endorsement.*

# Out Door Country Club

1157 Detwiler Drive  
York, PA 17404  
(717) 764-1188  
www.odcc.com

Directions [From I-83 & Rt. 30 intersection] Take Rt. 30 west (1/2 mile) and turn right onto Susquehanna Trail (you'll see Taco Bell). Proceed to the 3rd signal light, turn left onto Stillmeadow Lane. Proceed roughly  $\frac{1}{2}$  mile to a traffic light. Go straight through the intersection and proceed to 4th street on the left which is Detwiler Drive. Turn left onto Detwiler Drive and follow to a stop sign. Proceed past the stop sign and the Club is on your right. Turn right into the Club and follow the signs for the bag drop area.

Soft Spike Policy: The use of metal spikes is strictly prohibited. Sneakers are an acceptable alternative.

Dress Code: Walking shorts are permitted but must be no shorter than three (3") inches from the top of the knee cap. No cut-offs, bathing suits, blue denim jeans, tennis skirts, jogging attire, brief attire or men's collarless shirts are allowed. Shirttails must be tucked in at all times on the golf course and in the club house.

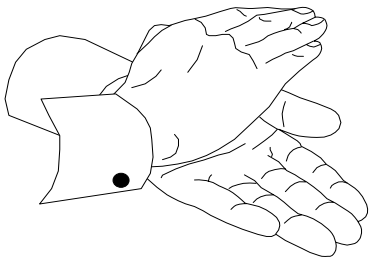
## HOW YOU HAVE HELPED!

*"100 years from now it will not matter what kind of house I lived in,  
How much money I had nor what my clothes were like.*

*But the World may be a little better because  
I was important in the life of a Child."*



Jarrett	Disney World	1997
Terry	Daytona 500	1998
Erin	Rosie O'Donnell	1999
Cierra	Disney World	2000
Miranda	Disney World	2001
Zoey	Disney World	2002
Tucker	Disney World	2003
Aiyana	Disney World	2004
Trent	Swimming Pool	2004
Zach	Rock Band Concert	2005
Brittany	English Bulldog	2005
Na'tia	Disney World	2006
Chesney	Pop-Up Camper	2006
Aaron	Disney World	2007
Zach	Pop-Up Camper	2007



# 14<sup>th</sup> Annual Charity Golf Classic

Thanks to your continued enthusiasm, the Penn-Air & Hydraulics Foundation announces our 14<sup>th</sup> Annual Charity Golf Classic. We recognize that without your generous contributions and player support this could not have been possible.

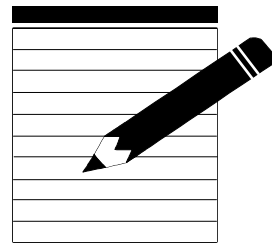
1994 Honey Run:	Drew 85 players and raised \$4,200.
1995 Out Door C.C.:	Drew 112 players and raised \$5,500.
1996 Hanover C.C.:	Drew 140 players and raised \$8,200.
1997 Heritage Hills:	Drew 128 players and raised \$5,400.
1998 Out Door C.C.:	Drew 116 players and raised \$12,800.
1999 Springwood:	Drew 108 players and raised \$12,400.
2000 The Bridges:	Drew 120 players and raised \$14,800.
2001 Crossgates G.C.:	Drew 133 players and raised \$16,800.
2002 Postponed event to 2003...donations received =	\$5,400.
2003 Regents' Glen C.C.:	Drew 100 players and raised \$8,100.
2004 Out Door C.C.:	Drew 88 players and raised \$12,600.
2005 Out Door C.C.:	Drew 81 players and raised \$11,900.
2006 Out Door C.C.:	Drew 96 players and raised \$16,200.
2007 Out Door C.C.:	Drew 88 players and raised \$13,500.

This year, YOU can make a difference:

- \* **SPONSOR A HOLE**: Mail a check for Gold (\$500) or Silver (\$300) sponsorship. Please let us know how your Company would like to be identified. Your contribution is tax deductible (\*). (Player registration fee not included in sponsorship.)
- \* **JOIN US AND PLAY**: Complete the attached registration form and join us on June 27<sup>th</sup> at Out Door. We are limited to the first 112 registered and paid players.
- \* **ENCLOSE A GIFT**: I cannot participate in the outing, but would like to donate a gift and/or prize.

# Registration \*\*

Due by June 6<sup>th</sup>



DATE: Friday June 27<sup>th</sup>, 2008

TIME: 7:00<sub>AM</sub> Registration & Continental Breakfast

8:00<sub>AM</sub> Golf - Shotgun Start - Scramble Format

1:00<sub>PM</sub> Buffet Lunch & Prizes - Patio

PLACE: Out Door Country Club

FEE: \$150.00

INCLUDES: 18 holes-Scramble format, golf cart, practice balls, continental breakfast, buffet lunch, beer/soda/snacks, complimentary gifts, plenty of prizes!

===== tear here and return the bottom portion only =====

Name: \_\_\_\_\_ Phone: \_\_\_\_\_

If playing in a foursome, please list the names of the four players below:

#1 \_\_\_\_\_ #2 \_\_\_\_\_

#3 \_\_\_\_\_ #4 \_\_\_\_\_

Reservation for Hotel: Wednesday 6/25\_\_\_\_ Thursday 6/26\_\_\_\_ Friday 6/27\_\_\_\_

The single rate is \$109.00 + tax per night at The Hampton Inn, York. We have blocked out rooms for our out of town guests. Please indicate which nights you will be staying. Please pay for the room upon your arrival.

GOLD SPONSORSHIP: \$ 500.00 \_\_\_\_\_ Please indicate how we should identify your sign.

SILVER SPONSORSHIP: \$ 300.00 \_\_\_\_\_ Please indicate how we should identify your sign.

JOIN US FOR THE DAY: \$ 150.00 \_\_\_\_\_ Please mail your check before June 6<sup>th</sup>.

ENCLOSE A GIFT: DONATION \_\_\_\_\_ Please send your gift or check to address below.

=====> Please make checks payable to:

TOTAL:  PENN-AIR & HYDRAULICS FOUNDATION

Please mail, fax or email to:

Penn-Air & Hydraulics Foundation

Attn: Bob Rhein P.O. Box 132 York, PA 17405-0132

Phone: (717) 840-8100 Fax: (717) 840-4321 Email: [brhein@pennair.com](mailto:brhein@pennair.com)

\*\* NOTE: We have historically sold out the event. Please reply promptly...thank you!

PENN-AIR & HYDRAULICS  
FOUNDATION  
P.O. BOX 132  
YORK, PA 17405-0132



## Thank You... 2007 "GOLD" Sponsors

ITT/Enidine Incorporated  
Beach Filter Products, Inc.  
PNC Wealth Management  
Bimba Manufacturing Company  
Conrad Family LP  
Brewery Products Company  
Debbie & Peter Cooper  
Franklin R. Hatcher - Group Insurance  
Kling Bros. Insurance Agency  
CGA Law Firm  
PAH/PF/KP Associates  
Olde York Homes  
M & T Bank

Foster Manufacturing Company  
IMI Norgren, Inc.  
Sharon & Mike Cooper  
The Sheffer Corporation  
Canfield Industries  
Gina & Jim Conrad  
Freelin-Wade Company  
Butler, Gingerich & Co.  
Marada Industries  
D.H. Evans Associates, Inc.  
Versa Products Company, Inc.  
SenSource, Inc.  
Alkon Corporation