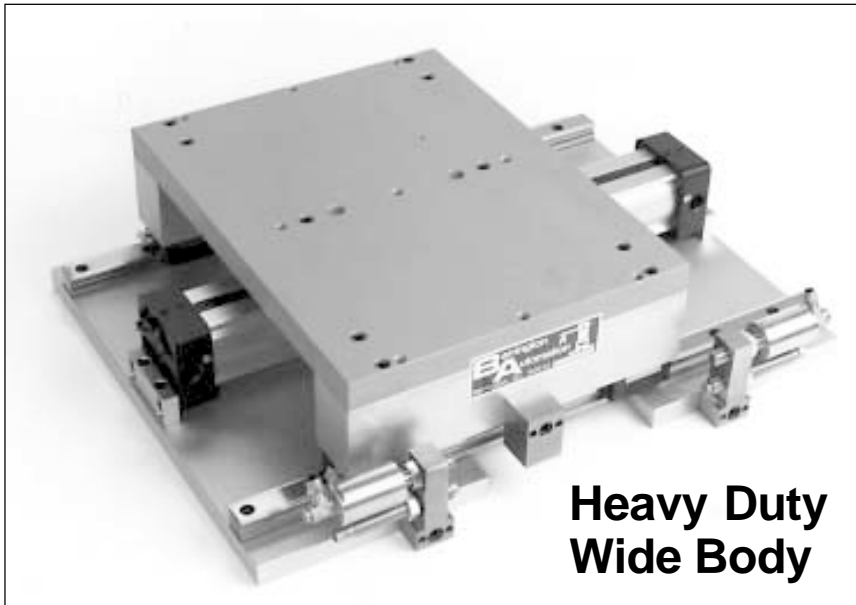


TSHD-4W Table Slide

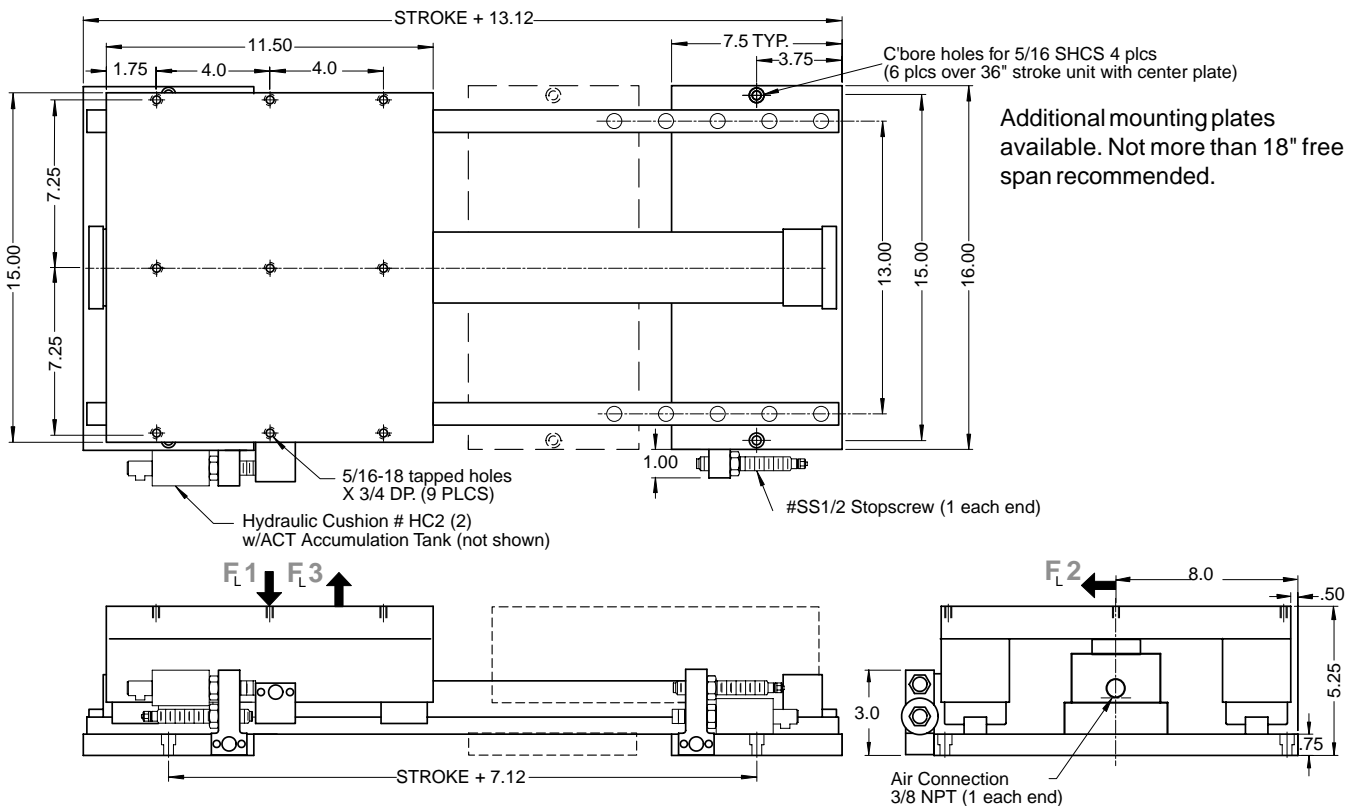


Heavy Duty Wide Body



Optional sensing switches available.
See pages 82-85

Note: The wide body slides are designed for cantilever loads on the carrier or high right angle torque applications.



Order:
TSHD-4W-(stroke)
Bore = 1 1/2"
Force at 80 psi: 120 lbs

F_{L1} = 480
F_{L2} = .75 x F_{L1}
F_{L3} = .50 x F_{L1}
Approx. Weight = 55 lbs + .30 x (stroke) = lbs
Available strokes up to 144" in 1" increments

Technical data

- Stroke designed with built in stopscrews with fine threads
- The stopscrews can be used with sensing switches
- Designed for production rates and long life
- Seal kits and rebuilt kits available.

Operating medium
Operating pressure
Repeat accuracy
Air connection

Compressed air
60-100 psi
±0.0005 in
3/8 NPT