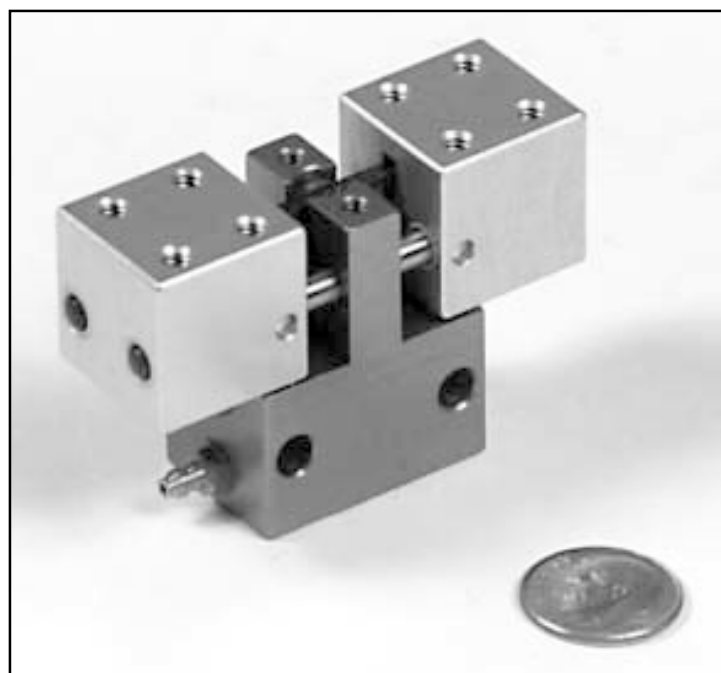


BG-P3

These true parallel grippers have large tooling mounting pads with a high force to weight ratio. The double acting cylinder requires air pressure to open and close the gripper fingers.

Tool mounting pads are drilled and tapped for your tooling. Gripper body and tool mounting pads are anodized aluminum.



TECHNICAL DATA:

Weight	3.2 oz
Max Rec Load	8 oz
Force @ 80 PSI	9.0 lbs
Operating Pressure	60-100 PSI

