

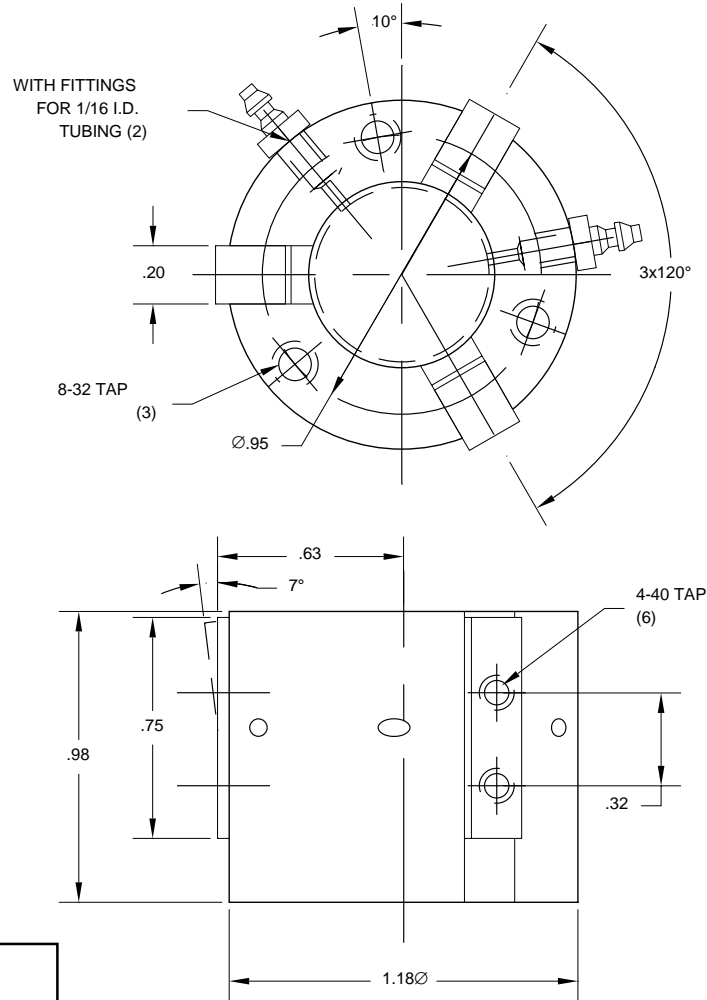
Gripper Radial Motion 3 Jaw Toggle Joint Double Acting



BG-3J-1

Grippers have large toggle type mechanisms with externally mounted fingers for attaching tooling for either internal or external part gripping applications. Grip force is determined by relation of tooling to toggle pivot points and part to be gripped. By choosing the mounting surface, the highest grip force is attained.

Steel fingers are drilled and tapped for your tooling. Gripper body is anodized aluminum.



TECHNICAL DATA:	
Weight	2 oz
Max Rec Load	1 lb
Min Gripping Force @ 80 PSI	4.4 in/lbs
Max Gripping Force @ 80 PSI	29 in/lbs
Operating Pressure	60-100 PSI